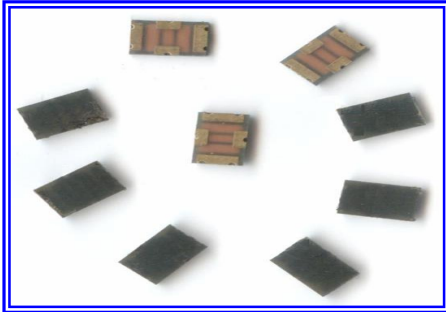




# SJC-36 36Vdc SELF CIRCUIT CONTROLER 2416 SELF PROTECT CONTROLER

Patent: Pending  
Taiwan:097144890  
USA: 12/344,972  
JP: 50900290719  
Germany:  
102008054989.4



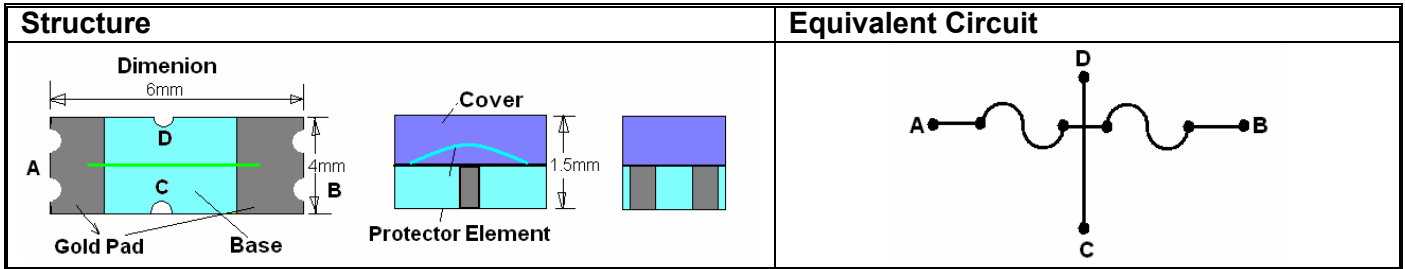
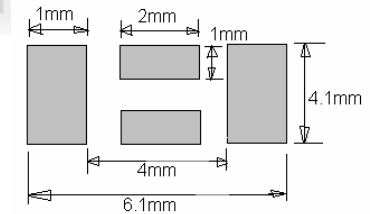
### Characteristic :

- Fuse element is the high pure Ag/Cu alloy
- All rating current is 36V/dc
- Don't care voltage with current relation
- High precise action time
- High inrush current capacity
- Ever voltage easy protect circuit
- Compliant ROHS , Deca-BDE , REACH
- Self control protector
- Low rating current and many rating current choose

### Specification :

- Agency approval : UL 1A~8A/36Vdc
- Breaking Capacity (IR) : 50A 36Vdc
- Insulation Resistance : Up 2000MΩ After Fuse Melt
- Operating Temperature : -55℃~125℃
- Resistance To Solder Heat : Max. 260℃ 10Sec.
- Resistance Solder Parameters : Reflow Solder ~ 260℃ 10sec. Max.  
Use Solder Paste In Controller Back Side .
- Packing Specifications : 12 mm Tape and Reel Per EIA-RS481 : 3kpcs Per Reel

### Recommended Land Pattern



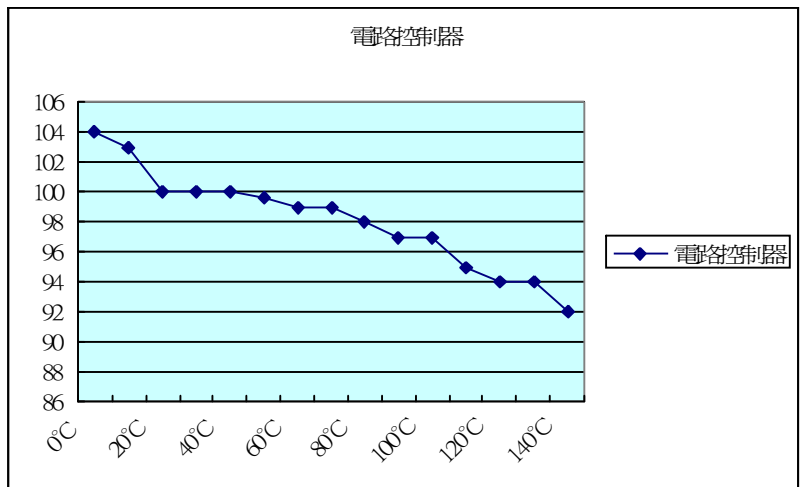
### Terminal Electrical Characteristics :

A~B Terminal Rating A (In)	125%	200%	90℃ Temper. De-rating
Acting Time	Min. 1 Hrs.	Max. 10 Sec.	Less 5%
C or D~A or B Terminal Rating A (In)	150%	250%	
Self Protect Time	Min 1 Hrs.	Max. 5 Sec.	Less 4%

### Products information :

Product No. & CODE	Rating A	Rating V	Max. Cold Ω	I <sup>2</sup> t At 10In (A~B)
SJC36001	1A	36V/dc	190mΩ	0.21
SJC36002	1.25A	36V/dc	86mΩ	0.33
SJC36003	1.6A	36V/dc	82mΩ	0.54
SJC36004	2A	36V/dc	70mΩ	0.84
SJC36005	2.5A	36V/dc	66mΩ	1.31
SJC36006	3.15A	36V/dc	60mΩ	2.08
SJC36007	3.5A	36V/dc	50mΩ	2.57
SJC36008	4A	36V/dc	40mΩ	3.36
SJC36009	5A	36V/dc	32mΩ	5.25
SJC36010	6A	36V/dc	28mΩ	6.32
SJC36011	7A	36V/dc	20mΩ	10.29
SJC36012	8A	36V/dc	16mΩ	13.44
SJC36013	9A	36V/dc	12mΩ	17.01
SJC36014	10A	36V/dc	10mΩ	21
SJC36015	12A	36V/dc	9mΩ	30.24
SJC36016	13A	36V/dc	8mΩ	35.49
SJC36017	15A	36V/dc	6mΩ	47.25
SJC36018	16A	36V/dc	5mΩ	53.76

本產品使用環境溫度幾無影響.溫度衰減率極低



① : The value current is one sec. one time Pulse current over 100k time .